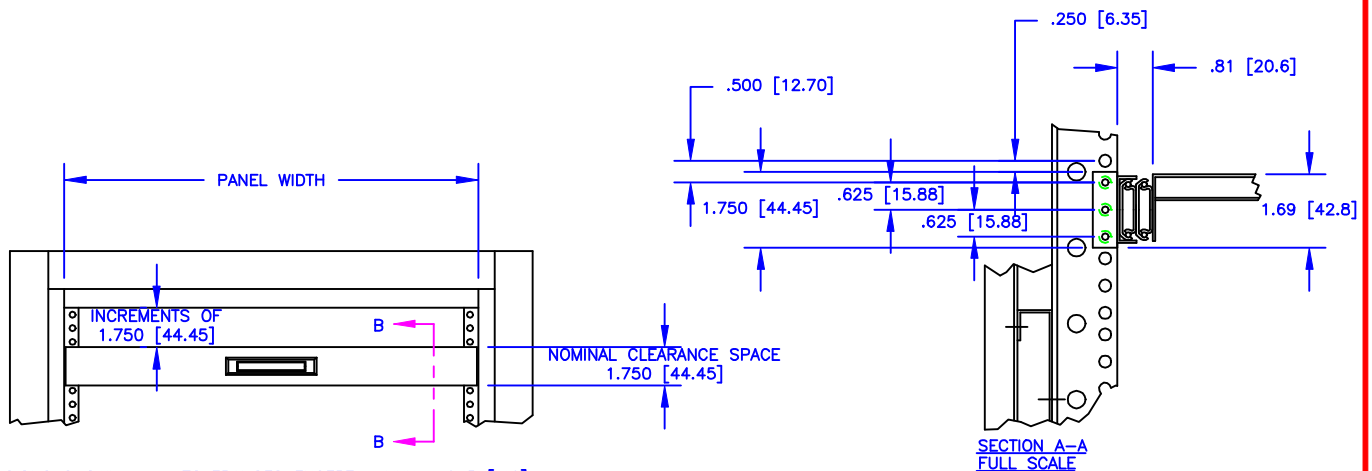
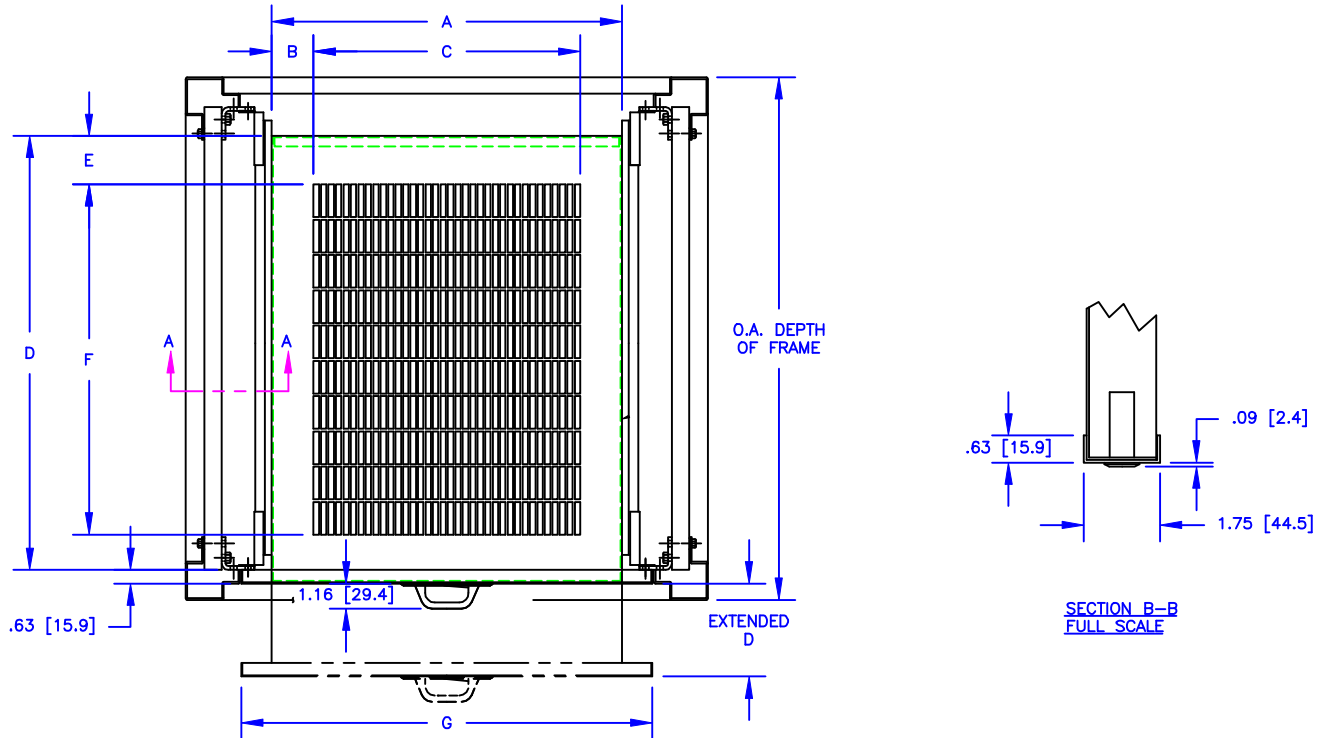


PANEL WIDTH OF CABINET FRAME	OVER-ALL DEPTH OF CABINET FRAME	PART NO. OF PLAIN SHELF ASSEMBLY		PART NO. OF GRILLED SHELF ASSEMBLY		A	B	C	D	E	F	G
		NON-LATCH TYPE	LATCH TYPE	NON-LATCH TYPE	LATCH TYPE							
19.06" [484.2]	17.06 [433.4]	511-010-010	511-010-011	511-010-030	511-010-031	16.12 [409.6]	1.92 [48.8]	12.28 [311.9]	13.44 [341.3]	1.91 [48.4]	9.62 [244.5]	18.94 [481.0]
	24.06 [611.2]	511-020-010	511-020-011	511-020-030	511-020-031				20.00 [508.0]	1.94 [49.2]	16.12 [409.6]	
	29.06 [738.2]	511-030-010	511-030-011	511-030-030	511-030-031							
	36.06 [916.0]	511-036-010	511-036-011	511-036-030	511-036-031							
24.06" [611.2]	17.06 [433.4]	511-040-010	511-040-011	511-040-030	511-040-031	21.12 [536.6]	3.39 [86.1]	14.34 [364.3]	13.44 [341.3]	1.91 [48.4]	9.62 [244.5]	23.94 [608.0]
	24.06 [611.2]	511-050-010	511-050-011	511-050-030	511-050-031				20.00 [508.0]	1.94 [49.2]	16.12 [409.6]	
	29.06 [738.2]	511-060-010	511-060-011	511-060-030	511-060-031							
	36.06 [916.0]	511-066-010	511-066-011	511-066-030	511-066-031							



DIMENSIONS SHOWN INCHES [MILLIMETER] TOLERANCES EXCEPT AS SHOWN .XXX ±.015 [.40] .XX ±.030 [.79]

THE INVENTION, DESIGN, DETAIL AND TECHNICAL DATA SHOWN IN THIS REPRODUCTION OF ONE OF OUR PROPRIETARY ENGINEERING DRAWINGS IS THE PROPERTY OF EQUIPTO ELECTRONICS CORPORATION AND MUST BE USED SOLELY IN CONSIDERING THE PURCHASE FROM EQUIPTO ELECTRONICS CORPORATION OF THE EQUIPMENT OR MATERIAL DESCRIBED. ALL RIGHTS IN RESPECT THERETO ARE, THRU THIS DECLARATION, EXPRESSLY RESERVED, SPECIFICALLY PRECLUDING THE COPYING IN WHOLE OR PART WITHOUT OUR WRITTEN CONSENT.

EQUIPTO ENCLOSURE SYSTEMS

RECESSED PULL-OUT SHELVES