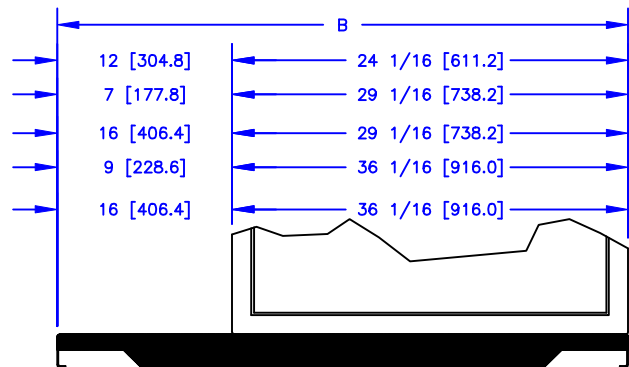


FRAME DEPTH	PART NUMBER	A	B	C	D	E
24 1/16 [611.2]	081-020-010	24.00 [609.6]	36.00 [914.4]	12.56 [319.1]	5.00 [127.0]	22.78 [578.6]
	081-050-010	29.00 [736.6]	36.00 [914.4]	12.56 [319.1]	5.00 [127.0]	22.78 [578.6]
29 1/16 [738.2]	081-030-010	24.00 [609.6]	45.00 [1143.0]	17.56 [446.1]	7.00 [177.8]	27.78 [705.6]
	081-060-010	29.00 [736.6]	45.00 [1143.0]	17.56 [446.1]	7.00 [177.8]	27.78 [705.6]
36 1/16 [916.0]	081-036-010	24.00 [609.6]	52.00 [1320.8]	24.56 [623.9]	-----	34.78 [883.4]
	081-066-010	29.00 [736.6]	52.00 [1320.8]	24.56 [623.9]	-----	34.78 [883.4]



DIMENSIONS SHOWN
INCHES [MILLIMETER]

TOLERANCES EXCEPT
AS SHOWN .XXX ±.015 [.40]
.XX ±.030 [.79]

SIDE VIEW
WITH FRAME MTD.

EXTENDED CASTER DOLLY
FOR USE WITH 24 1/16" [611.2], 29 1/16" [738.2] &
36 1/16" [916.0] FRAME DEPTHS (SINGLE WIDTH)

THE INVENTION, DESIGN, DETAIL AND TECHNICAL DATA SHOWN IN THIS REPRODUCTION OF ONE OF OUR PROPRIETARY ENGINEERING DRAWINGS IS THE PROPERTY OF EQUIPTO ELECTRONICS CORPORATION AND MUST BE USED SOLELY IN CONSIDERING THE PURCHASE FROM EQUIPTO ELECTRONICS CORPORATION OF THE EQUIPMENT OR MATERIAL DESCRIBED. ALL RIGHTS IN RESPECT THERETO ARE, THRU THIS DECLARATION, EXPRESSLY RESERVED, SPECIFICALLY PRECLUDING THE COPYING IN WHOLE OR PART WITHOUT OUR WRITTEN CONSENT.

EQUIPTO ENCLOSURE SYSTEMS