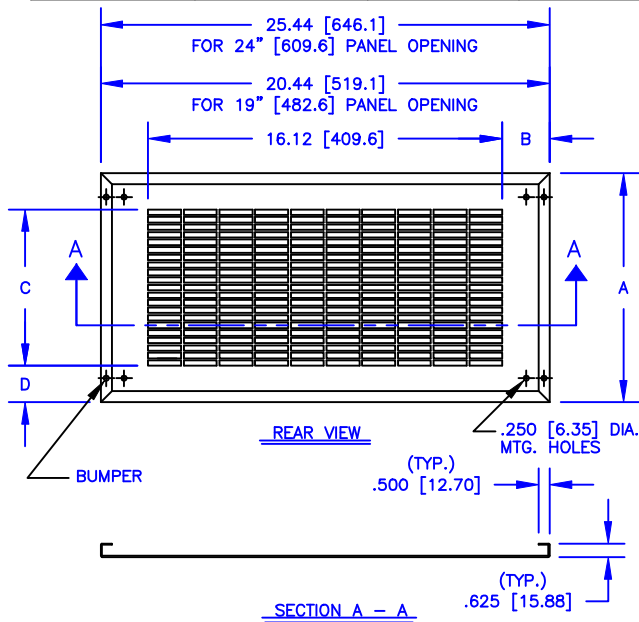


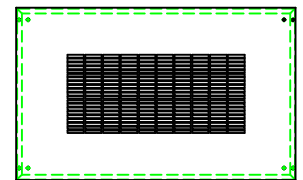
PART NUMBER PLAIN FLUSH FILLER PANEL		
FOR 19" [482.6]	FOR 24" [609.6]	A
401-101-010	401-201-010	1.69 [42.9]
401-103-010	401-203-010	3.44 [87.3]
401-105-010	401-205-010	5.19 [131.8]
401-107-010	401-207-010	6.94 [176.2]
401-108-010	401-208-010	8.69 [220.7]
401-110-010	401-210-010	10.44 [265.1]
401-112-010	401-212-010	12.19 [309.6]
401-114-010	401-214-010	13.94 [354.0]
401-115-010	401-215-010	15.69 [398.5]

PART NUMBER LOUVERED FLUSH FILLER PANEL		
FOR 19" [482.6]	FOR 24" [609.6]	A
401-107-014	401-207-014	6.94 [176.2]
401-108-014	401-208-014	8.69 [220.7]
401-110-014	401-210-014	10.44 [265.1]
401-112-014	401-212-014	12.19 [309.6]
401-114-014	401-214-014	13.94 [354.0]
401-115-014	401-215-014	15.69 [398.5]

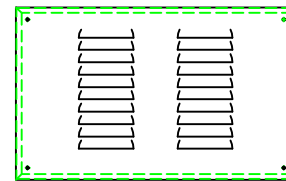
PART NUMBER GRILLED or GRILLED & FILTERED FLUSH FILLER PANEL						
GRILLED	GRILLED & FILTERED	A	B	C	D	PANEL OPENING
401-107-019	401-107-039	6.94 [176.2]	2.16 [54.8]	3.69 [93.7]	1.62 [41.3]	FOR 19" [482.6]
401-207-019	401-207-039	6.94 [176.2]	4.66 [118.3]	3.69 [93.7]	1.62 [41.3]	FOR 24" [609.6]
401-108-019	401-108-039	8.69 [220.7]	2.16 [54.8]	3.69 [93.7]	2.50 [63.5]	FOR 19" [482.6]
401-208-019	401-208-039	8.69 [220.7]	4.66 [118.3]	3.69 [93.7]	2.50 [63.5]	FOR 24" [609.6]
401-110-019	401-110-039	10.44 [265.1]	2.16 [54.8]	7.12 [181.0]	1.66 [42.1]	FOR 19" [482.6]
401-210-019	401-210-039	10.44 [265.1]	4.66 [118.3]	7.12 [181.0]	1.66 [42.1]	FOR 24" [609.6]
401-112-019	401-112-039	12.19 [309.6]	2.16 [54.8]	7.12 [181.0]	2.53 [64.3]	FOR 19" [482.6]
401-212-019	401-212-039	12.19 [309.6]	4.66 [118.3]	7.12 [181.0]	2.53 [64.3]	FOR 24" [609.6]
401-114-019	401-114-039	13.94 [354.0]	2.16 [54.8]	7.12 [181.0]	3.41 [86.5]	FOR 19" [482.6]
401-214-019	401-214-039	13.94 [354.0]	4.66 [118.3]	7.12 [181.0]	3.41 [86.5]	FOR 24" [609.6]
401-115-019	401-115-039	15.69 [398.5]	2.16 [54.8]	7.12 [181.0]	4.28 [108.7]	FOR 19" [482.6]
401-215-019	401-215-039	15.69 [398.5]	4.66 [118.3]	7.12 [181.0]	4.28 [108.7]	FOR 24" [609.6]



PLAIN



GRILLED
or
GRILLED & FILTERED



LOUVERED

NOTE: GRILLED FILLER PANEL IS SHOWN.
PLAIN AND LOUVERED PANELS ARE FORMED
IN THE SAME MANNER

REFER TO PAGE 31 FOR SCREW FASTENING DETAIL
REFER TO PAGE 44 FOR LOUVER DETAILS
REFER TO PAGE 45 FOR GRILLING DETAILS
REFER TO PAGE 39 FOR TYP. USES AND LOCATIONS

DIMENSIONS SHOWN
INCHES [MILLIMETER]

TOLERANCES EXCEPT
AS SHOWN .XXX ±.015 [.40]
.XX ±.030 [.79]

FLUSH FILLER PANELS; PLAIN, GRILLED, or LOUVERED

THE INVENTION, DESIGN, DETAIL AND TECHNICAL DATA SHOWN IN THIS REPRODUCTION OF ONE OF OUR PROPRIETARY ENGINEERING DRAWINGS IS THE PROPERTY OF EQUIPTO ELECTRONICS CORPORATION AND MUST BE USED SOLELY IN CONSIDERING THE PURCHASE FROM EQUIPTO ELECTRONICS CORPORATION OF THE EQUIPMENT OR MATERIAL DESCRIBED. ALL RIGHTS IN RESPECT THERETO ARE, THRU THIS DECLARATION, EXPRESSLY RESERVED, SPECIFICALLY PRECLUDING THE COPYING IN WHOLE OR PART WITHOUT OUR WRITTEN CONSENT.

EQUIPTO ENCLOSURE SYSTEMS