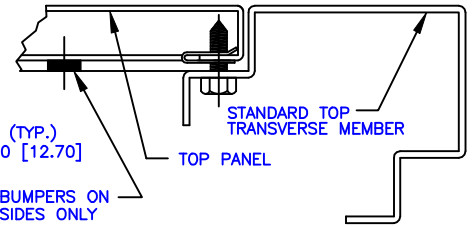


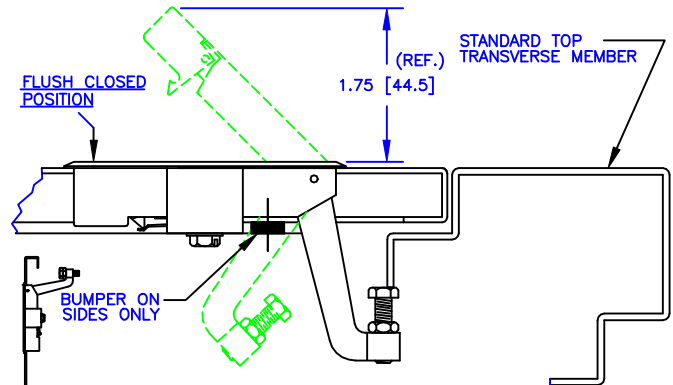
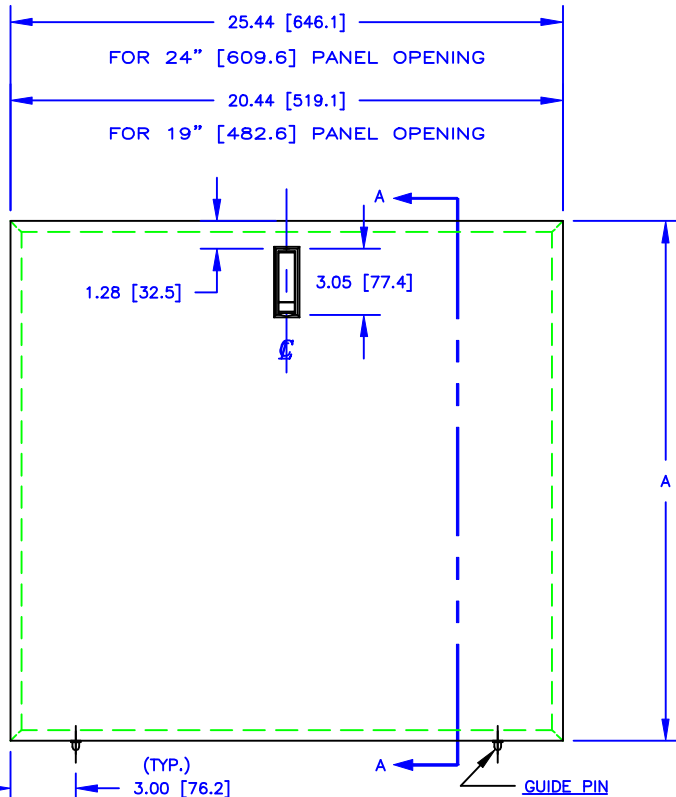
(TYP.)  
.625 [15.88]



DETAIL OF TOP PANEL SCREW FASTENED

SCREW FASTENED FLUSH TOP PANEL	PANEL OPENING	FRAME DEPTH	A
371-020-010	19" [482.6]	24.06 [611.2]	18.94 [481.0]
371-030-010		29.06 [738.2]	23.94 [608.0]
371-036-010		36.06 [916.0]	30.94 [785.8]
371-050-010	24" [609.6]	24.06 [611.2]	18.94 [481.0]
371-060-010		29.06 [738.2]	23.94 [608.0]
371-066-010		36.06 [916.0]	30.94 [785.8]

SECTION A - A



TOP PANEL LATCHING DETAIL

LATCH FASTENED FLUSH TOP PANEL	PANEL OPENING	FRAME DEPTH	A
373-020-010	19" [482.6]	24.06 [611.2]	18.94 [481.0]
373-030-010		29.06 [738.2]	23.94 [608.0]
373-036-010		36.06 [916.0]	30.94 [785.8]
373-050-010	24" [609.6]	24.06 [611.2]	18.94 [481.0]
373-060-010		29.06 [738.2]	23.94 [608.0]
373-066-010		36.06 [916.0]	30.94 [785.8]

(TYP.)  
.500 [12.70]  
(TYP.)  
.625 [15.88]

SECTION A - A

DIMENSIONS SHOWN  
INCHES [MILLIMETER]

TOLERANCES EXCEPT  
AS SHOWN .XXX ±.015 [.40]  
.XX ±.030 [.79]

THE INVENTION, DESIGN, DETAIL AND TECHNICAL DATA SHOWN IN THIS REPRODUCTION OF ONE OF OUR PROPRIETARY ENGINEERING DRAWINGS IS THE PROPERTY OF EQUIPTO ELECTRONICS CORPORATION AND MUST BE USED SOLELY IN CONSIDERING THE PURCHASE FROM EQUIPTO ELECTRONICS CORPORATION OF THE EQUIPMENT OR MATERIAL DESCRIBED. ALL RIGHTS IN RESPECT THERETO ARE, THRU THIS DECLARATION, EXPRESSLY RESERVED, SPECIFICALLY PRECLUDING THE COPYING IN WHOLE OR PART WITHOUT OUR WRITTEN CONSENT.

EQUIPTO ENCLOSURE SYSTEMS

PLAIN OR LATCHED FLUSH TOP PANELS  
FOR 19" [482.6] & 24" [609.6] PANEL OPENING