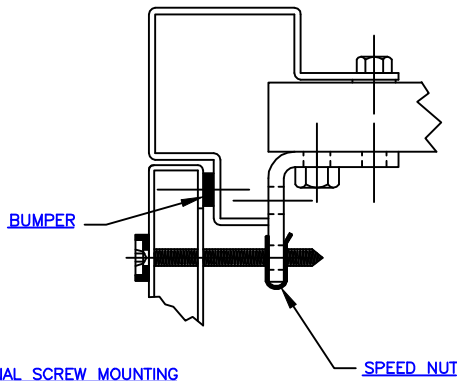
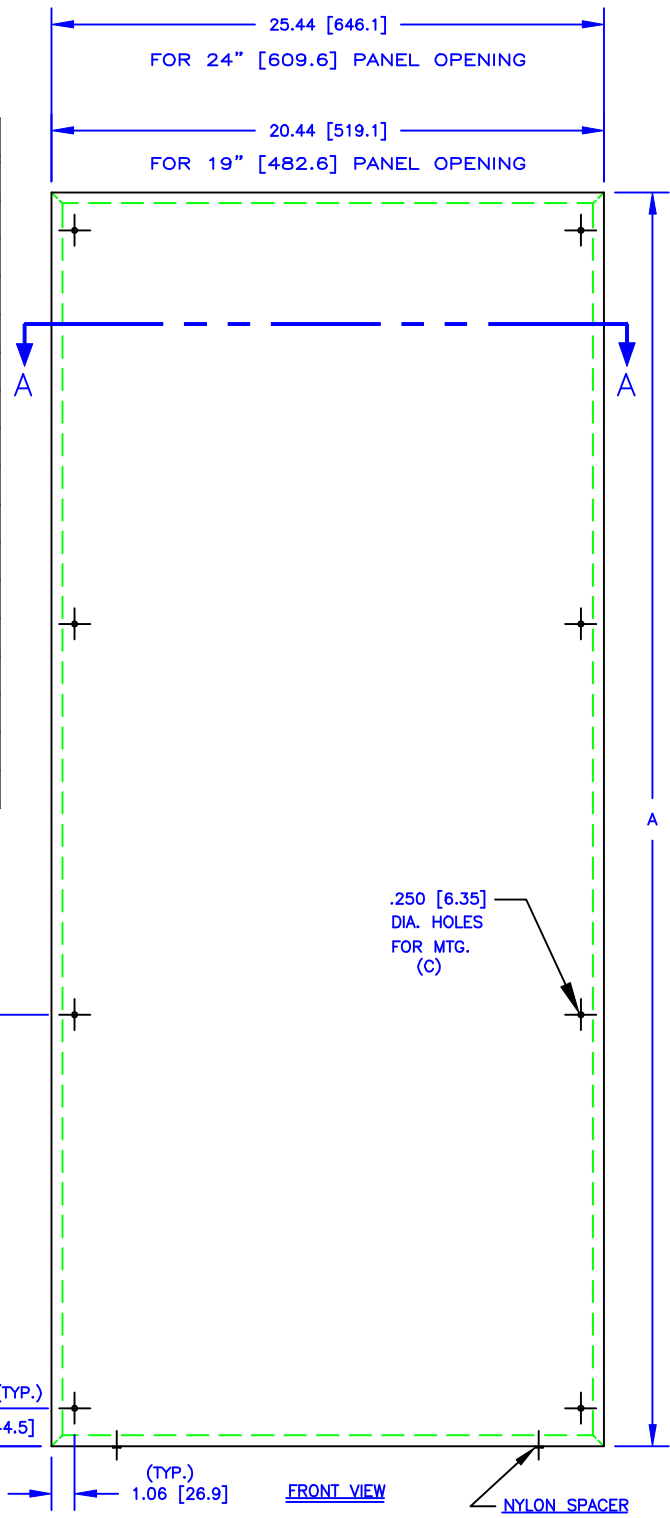


PANELS FRONT (& OR) REAR				
19" [482.6] PANEL OPENING	24" [609.6] PANEL OPENING			
PART NUMBER	PART NUMBER	A	B	C
391-115-010	391-215-010	17.50 [444.5]	-----	4
391-121-010	391-221-010	22.75 [577.9]	-----	4
391-128-010	391-228-010	29.75 [755.7]	-----	4
391-135-010	391-235-010	36.75 [933.5]	-----	4
391-136-010	391-236-010	38.50 [977.9]	19.25 [489.0]	6
391-138-010	391-238-010	40.25 [1022.4]	19.25 [489.0]	6
391-140-010	391-240-010	42.00 [1066.8]	21.00 [533.4]	6
391-142-010	391-242-010	43.75 [1111.3]	21.00 [533.4]	6
391-145-010	391-245-010	47.25 [1200.2]	22.75 [577.9]	6
391-149-010	391-249-010	50.75 [1289.1]	24.50 [622.3]	6
391-152-010	391-252-010	54.25 [1378.0]	26.25 [666.8]	6
391-156-010	391-256-010	57.75 [1466.9]	19.25 [489.0]	8
391-159-010	391-259-010	61.25 [1555.8]	21.00 [533.4]	8
391-163-010	391-263-010	64.75 [1644.7]	21.00 [533.4]	8
391-170-010	391-270-010	71.75 [1822.5]	24.50 [622.3]	8
391-177-010	391-277-010	78.75 [2000.3]	26.25 [666.8]	8
391-184-010	391-284-010	85.75 [2178.1]	28.00 [711.2]	8



EXTERNAL SCREW MOUNTING

CUTAWAY VIEW SHOWING PANEL SCREW FASTENED TO FRAME

DIMENSIONS SHOWN INCHES [MILLIMETER]

TOLERANCES EXCEPT AS SHOWN .XXX ±.015 [.40] .XX ±.030 [.79]

THE INVENTION, DESIGN, DETAIL AND TECHNICAL DATA SHOWN IN THIS REPRODUCTION OF ONE OF OUR PROPRIETARY ENGINEERING DRAWINGS IS THE PROPERTY OF EQUIPTO ELECTRONICS CORPORATION AND MUST BE USED SOLELY IN CONSIDERING THE PURCHASE FROM EQUIPTO ELECTRONICS CORPORATION OF THE EQUIPMENT OR MATERIAL DESCRIBED. ALL RIGHTS IN RESPECT THERETO ARE, THRU THIS DECLARATION, EXPRESSLY RESERVED, SPECIFICALLY PRECLUDING THE COPYING IN WHOLE OR PART WITHOUT OUR WRITTEN CONSENT.

EXTERNAL SCREW FASTENED FRONT & REAR PANELS FOR 19" [482.6] & 24" [609.6] PANEL OPENING

EQUIPTO ENCLOSURE SYSTEMS