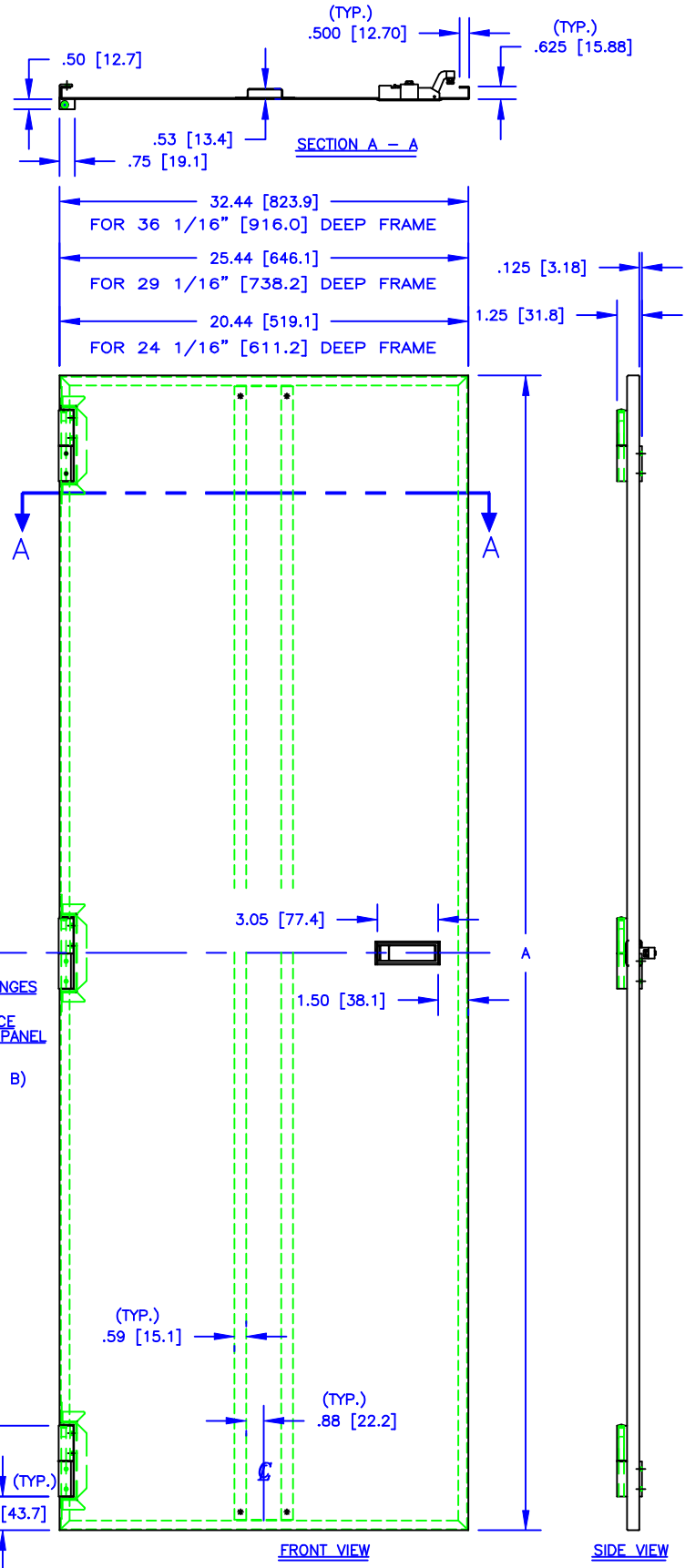


PANEL LATCHING DETAIL

24 1/16" [611.2] DEEP FRAME			
PART NUMBER L.H.	PART NUMBER R.H.	A	B
432-921-010	435-921-010	22.75 [577.9]	2
432-928-010	435-928-010	29.75 [755.7]	2
432-935-010	435-935-010	36.75 [933.5]	2
432-942-010	435-942-010	43.75 [1111.3]	2
432-949-010	435-949-010	50.75 [1289.1]	2
432-956-010	435-956-010	57.75 [1466.9]	3
432-963-010	435-963-010	64.75 [1544.7]	3
432-970-010	435-970-010	71.75 [1822.5]	3
432-977-010	435-977-010	78.75 [2000.3]	3
432-984-010	435-984-010	85.75 [2178.1]	3

29 1/16" [738.2] DEEP FRAME			
PART NUMBER L.H.	PART NUMBER R.H.	A	B
433-921-010	436-921-010	22.75 [577.9]	2
433-928-010	436-928-010	29.75 [755.7]	2
433-935-010	436-935-010	36.75 [933.5]	2
433-942-010	436-942-010	43.75 [1111.3]	2
433-949-010	436-949-010	50.75 [1289.1]	2
433-956-010	436-956-010	57.75 [1466.9]	3
433-963-010	436-963-010	64.75 [1544.7]	3
433-970-010	436-970-010	71.75 [1822.5]	3
433-977-010	436-977-010	78.75 [2000.3]	3
433-984-010	436-984-010	85.75 [2178.1]	3

36 1/16" [916.0] DEEP FRAME			
PART NUMBER L.H.	PART NUMBER R.H.	A	B
441-921-010	444-921-010	22.75 [577.9]	2
441-928-010	444-928-010	29.75 [755.7]	2
441-935-010	444-935-010	36.75 [933.5]	2
441-942-010	444-942-010	43.75 [1111.3]	2
441-949-010	444-949-010	50.75 [1289.1]	2
441-956-010	444-956-010	57.75 [1466.9]	3
441-963-010	444-963-010	64.75 [1544.7]	3
441-970-010	444-970-010	71.75 [1822.5]	3
441-977-010	444-977-010	78.75 [2000.3]	3
441-984-010	444-984-010	85.75 [2178.1]	3



LATCH FASTENED, HINGED SIDE PANEL FOR 24 1/16" [611.2] & 29 1/16" [738.2] & 36 1/16" [916.0] DEEP FRAMES

THE INVENTION, DESIGN, DETAIL AND TECHNICAL DATA SHOWN IN THIS REPRODUCTION OF ONE OF OUR PROPRIETARY ENGINEERING DRAWINGS IS THE PROPERTY OF EQUIPTO ELECTRONICS CORPORATION AND MUST BE USED SOLELY IN CONSIDERING THE PURCHASE FROM EQUIPTO ELECTRONICS CORPORATION OF THE EQUIPMENT OR MATERIAL DESCRIBED. ALL RIGHTS IN RESPECT THERETO ARE, THRU THIS DECLARATION, EXPRESSLY RESERVED, SPECIFICALLY PRECLUDING THE COPYING IN WHOLE OR PART WITHOUT OUR WRITTEN CONSENT.

EQUIPTO ENCLOSURE SYSTEMS