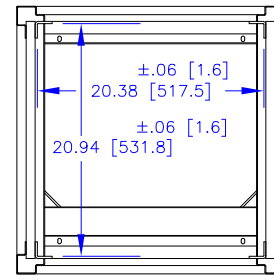
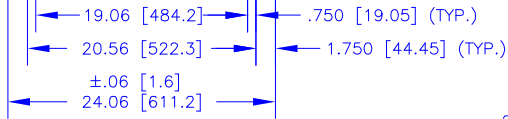
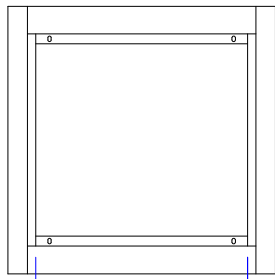
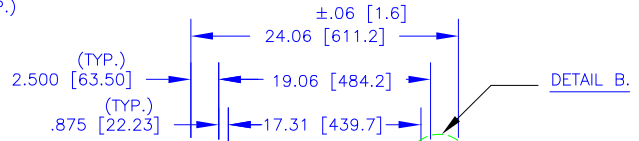


TOP VIEW

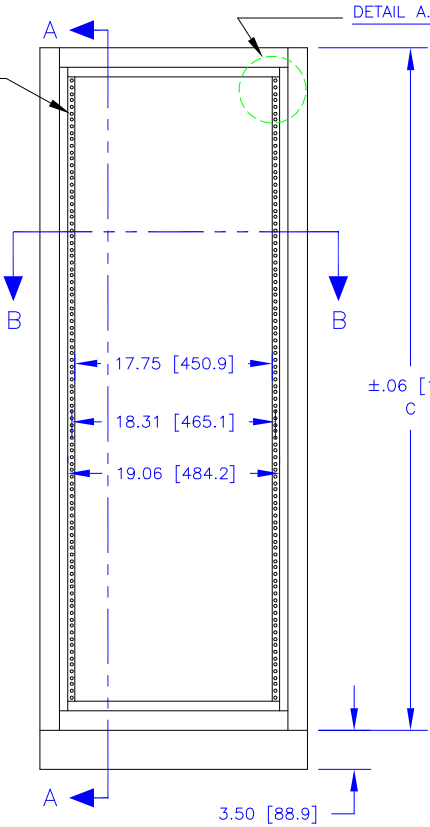


SECTION B-B

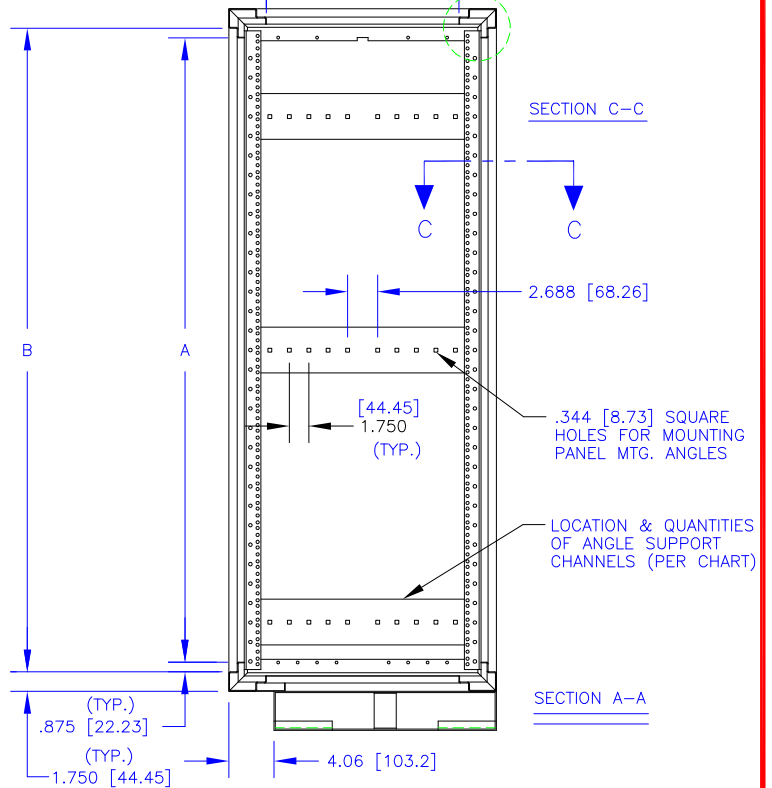


DETAIL B

.281 [7.14] DIA. MTG. HOLES, (UNIVERSAL SPACING PER E.I.A. STD. EIA-310)



FRONT VIEW



SECTION C-C

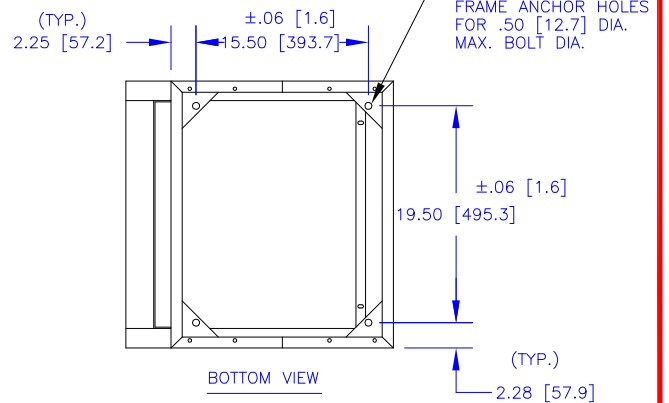
SECTION A-A

PART NUMBER	A	B	C
170-021-020	21.12 [536.6]	22.88 [581.0]	26.38 [669.9]
170-028-020	28.12 [714.4]	29.88 [758.8]	33.38 [847.7]
170-035-020	35.12 [892.2]	36.88 [936.6]	40.38 [1025.5]
170-042-020	42.12 [1070.0]	43.88 [1114.4]	47.38 [1203.3]
170-049-020	49.12 [1247.8]	50.88 [1292.2]	54.38 [1381.1]
170-056-020	56.12 [1425.6]	57.88 [1470.0]	61.38 [1558.9]
170-063-020	63.12 [1603.4]	64.88 [1647.8]	68.38 [1736.7]
170-070-020	70.12 [1781.2]	71.88 [1825.6]	75.38 [1914.5]
170-077-020	77.12 [1959.0]	78.88 [2003.4]	82.38 [2092.3]
170-084-020	84.12 [2136.8]	85.88 [2181.2]	89.38 [2270.1]

DIMENSIONS SHOWN INCHES [MILLIMETER]

TOLERANCES EXCEPT AS SHOWN .XXX ±.015 [.40] .XX ±.030 [.79]

NOTE: SHOWN W/ OPTIONAL RECESSE



BOTTOM VIEW

FRAMES, VERTICAL RACK  
19" [482.6] PANEL WIDTH  
24-1/16" [611.2] DEEP

THE INVENTION, DESIGN, DETAIL AND TECHNICAL DATA SHOWN IN THIS REPRODUCTION OF ONE OF OUR PROPRIETARY ENGINEERING DRAWINGS IS THE PROPERTY OF EQUIPTO ELECTRONICS CORPORATION AND MUST BE USED SOLELY IN CONSIDERING THE PURCHASE FROM EQUIPTO ELECTRONICS CORPORATION OF THE EQUIPMENT OR MATERIAL DESCRIBED. ALL RIGHTS IN RESPECT THERETO ARE, THRU THIS DECLARATION, EXPRESSLY RESERVED, SPECIFICALLY PRECLUDING THE COPYING IN WHOLE OR PART WITHOUT OUR WRITTEN CONSENT.

EQUIPTO ENCLOSURE SYSTEMS