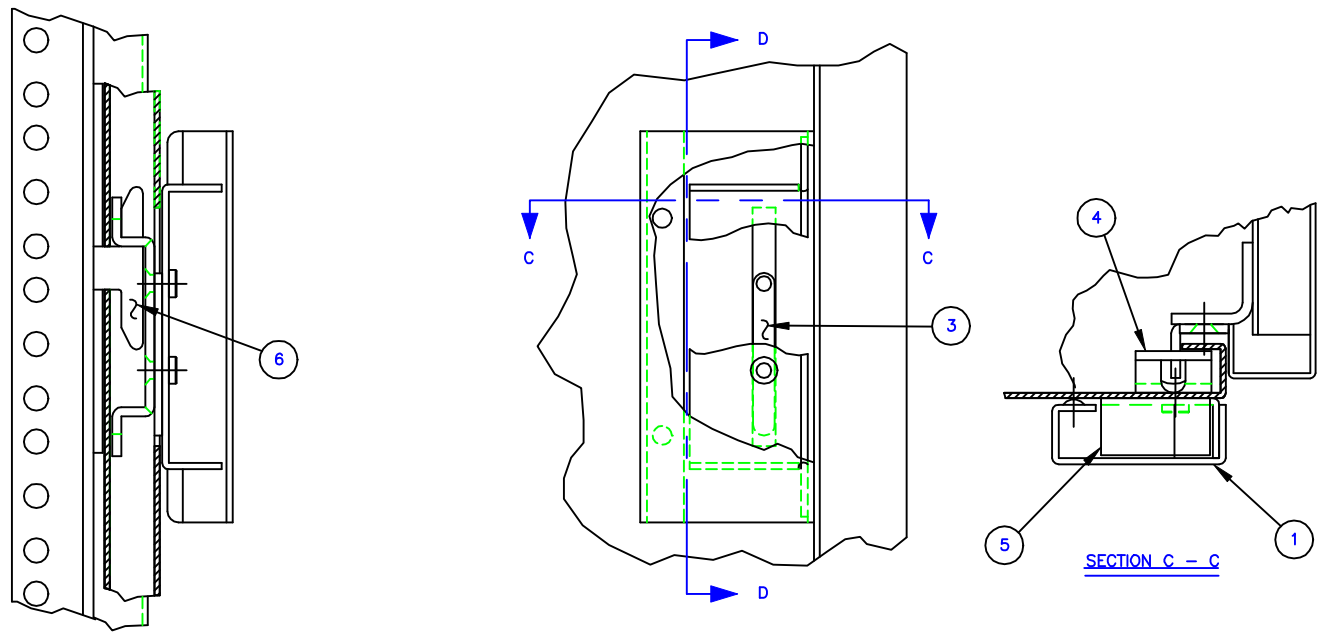


SECTION A - A

HINGE

SECTION B - B

PART NAME	PART NUMBER
1. HANDLE	12-01-00-06
2. HINGE	12-00-00-02
3. SPACER	11-00-00-05
4. LATCH BRACKET	12-03-00-06
5. NUT BRACKET	12-04-00-06
6. STRIKE	12-00-00-05



SECTION D - D

SECTION C - C

DIMENSIONS SHOWN  
INCHES [MILLIMETER]

TOLERANCES EXCEPT  
AS SHOWN .XXX ±.015 [.40]  
.XX ±.030 [.79]

THE INVENTION, DESIGN, DETAIL AND TECHNICAL DATA SHOWN IN THIS REPRODUCTION OF ONE OF OUR PROPRIETARY ENGINEERING DRAWINGS IS THE PROPERTY OF EQUIPTO ELECTRONICS CORPORATION AND MUST BE USED SOLELY IN CONSIDERING THE PURCHASE FROM EQUIPTO ELECTRONICS CORPORATION OF THE EQUIPMENT OR MATERIAL DESCRIBED. ALL RIGHTS IN RESPECT THERETO ARE, THRU THIS DECLARATION, EXPRESSLY RESERVED, SPECIFICALLY PRECLUDING THE COPYING IN WHOLE OR PART WITHOUT OUR WRITTEN CONSENT.

EQUIPTO ENCLOSURE SYSTEMS

## HINGE & LATCH DETAILS FOR FLUSH DOORS