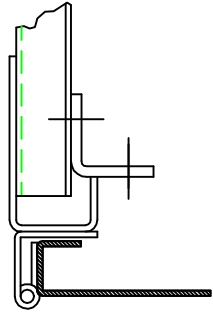
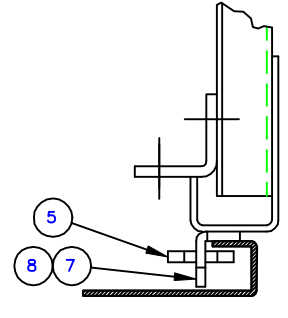


HINGE

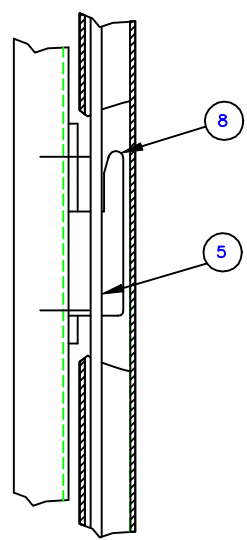


SECTION C - C

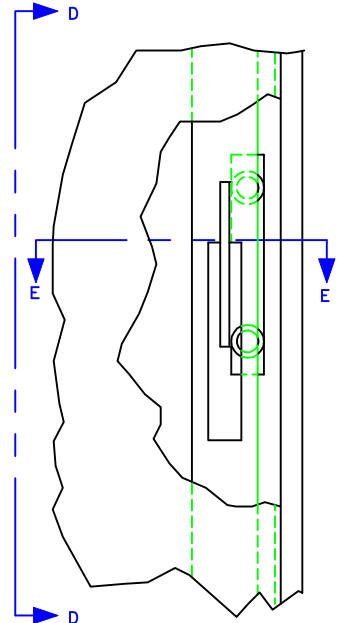


SECTION E - E

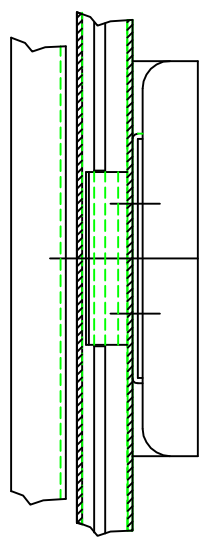
<u>PART NAME</u>	<u>PART NUMBER</u>
1. HANDLE	11-00-00-01
2. HINGE	11-00-00-03
3. SPACER	11-00-00-05
4. LATCH CHANNEL	11-00-00-06
5. LATCH BAR	11-99-00-06
6. STOP	11-00-00-07
7. STRIKE, R.H.	11-00-00-15
8. STRIKE, L.H., SHOWN	11-00-00-14



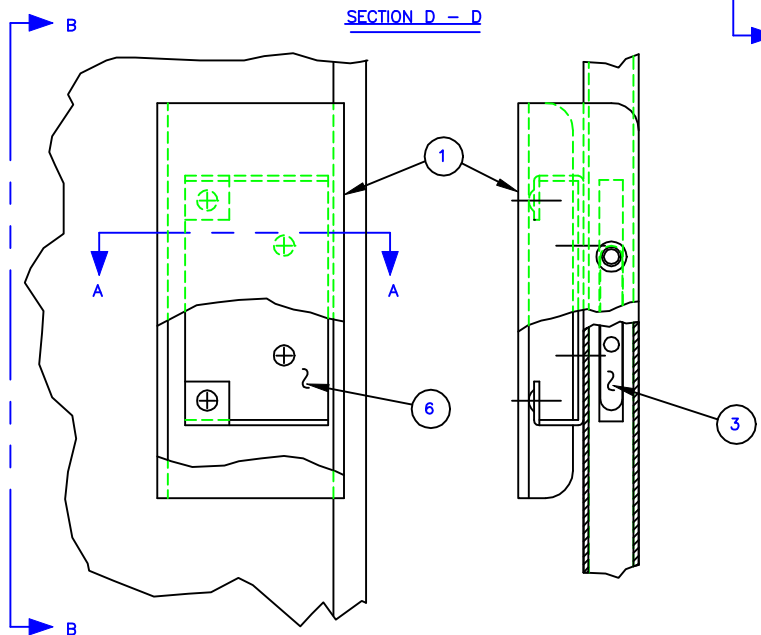
SECTION D - D



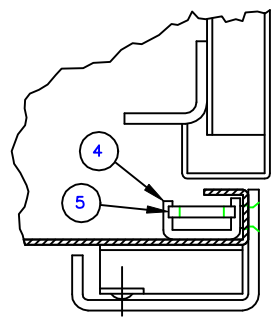
STRIKE



SECTION B - B



HANDLE



SECTION A - A

DIMENSIONS SHOWN
INCHES [MILLIMETER]

TOLERANCES EXCEPT
AS SHOWN .XXX ±.015 [.40]
.XX ±.030 [.79]

HINGE & LATCH DETAILS FOR FACE MOUNTED DOORS

THE INVENTION, DESIGN, DETAIL AND TECHNICAL DATA SHOWN IN THIS REPRODUCTION OF ONE OF OUR PROPRIETARY ENGINEERING DRAWINGS IS THE PROPERTY OF EQUIPTO ELECTRONICS CORPORATION AND MUST BE USED SOLELY IN CONSIDERING THE PURCHASE FROM EQUIPTO ELECTRONICS CORPORATION OF THE EQUIPMENT OR MATERIAL DESCRIBED. ALL RIGHTS IN RESPECT THERETO ARE, THRU THIS DECLARATION, EXPRESSLY RESERVED, SPECIFICALLY PRECLUDING THE COPYING IN WHOLE OR PART WITHOUT OUR WRITTEN CONSENT.

EQUIPTO ENCLOSURE SYSTEMS